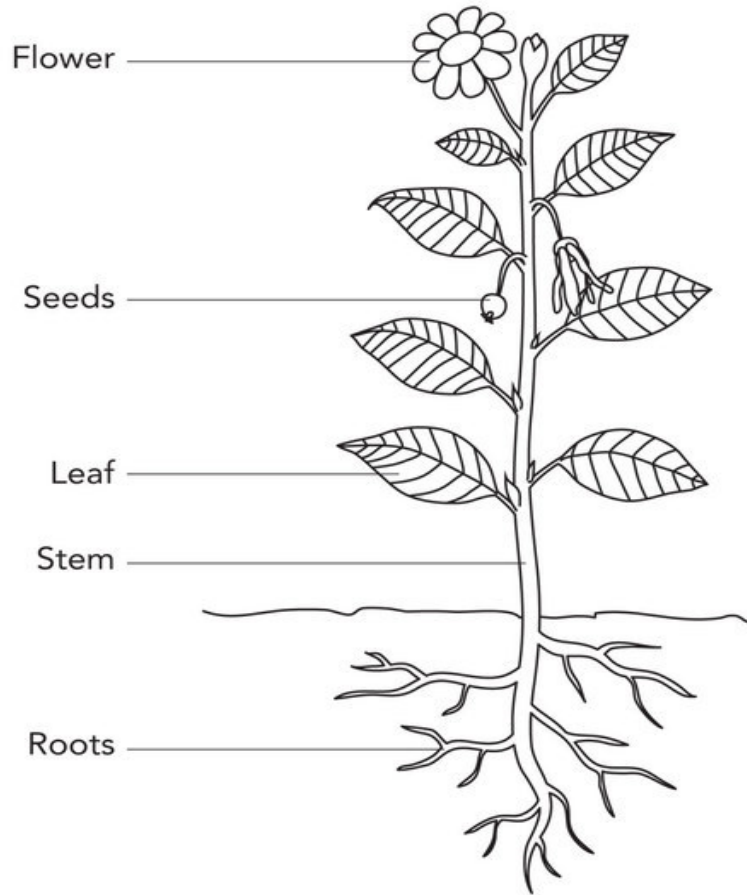


## Parts of Plants



### Did you know?

Flowers did not always exist; they first appeared 140 million years ago.

Broccoli is actually a flower. If left to grow they, they open into tiny yellow flowers.

Some plants, such as orchids, do not need soil to grow as they get nutrients from the air.

Sunflowers move throughout the day in response to the movement of the sun.

## Year 1 Knowledge Organiser

### Key Facts

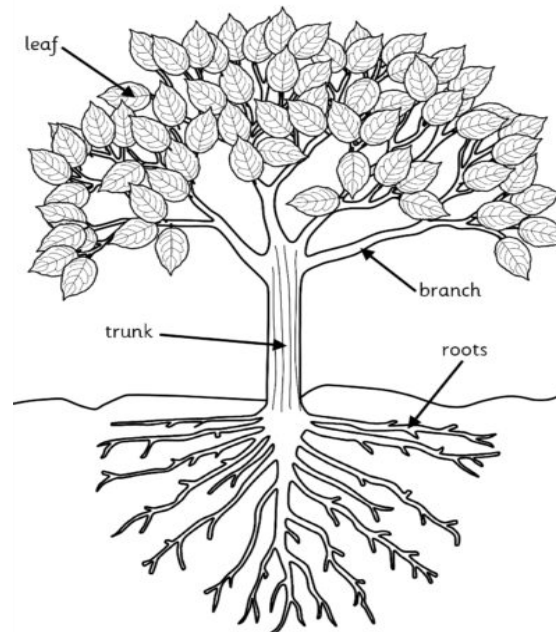
Plants get their energy from sunlight, water and minerals in the soil so they make their own food.

Plants take in CO<sup>2</sup> through their leaves and release oxygen back through their leaves.

Trees that lose their leaves during winter are called deciduous.

Trees can live anywhere from less than 100 years up to more than a thousand years.

### Parts of a Tree



## Key Vocabulary

Flower	A flower is the part of the plant which is often brightly coloured, and only survives a short time.
Seed	A small round or oval object produced by a plant and from which, when it is planted a new plant will grow.
Leaf	One of the flat, usually green parts of a plant that are joined at one end to the stem.
Stem	The main body or stalk of a plant
Roots	The part of the plant which grows down in the ground to get water and nutrients.
Evergreen	Relating to a plant that retains green leaves throughout the year.
Deciduous	A tree or shrub that sheds its leaves annually.
Trunk	The main woody stem of a tree as distinct from its branches and roots.
Branch	A part of a tree that grows out from the trunk.
Nutrients	A substance that provides nourishment essential for the maintenance of life and growth.
Fruit	The seed-bearing structure in flowering plants.
Bulb	A round root of some plants from which the plant grows.
Petal	Part of the flower that is a brightly coloured ring surrounding the centre.